

42/95

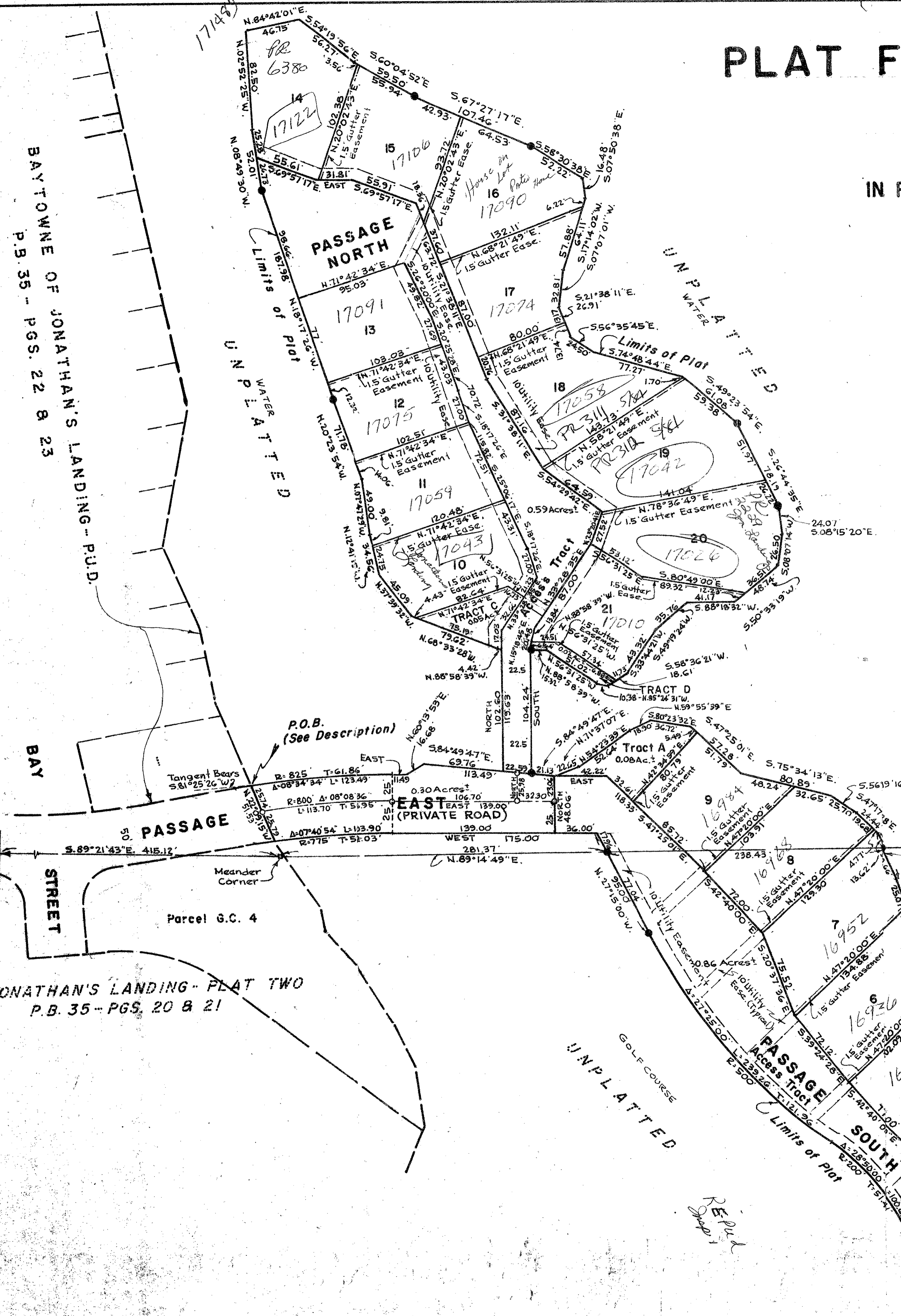
# PLAT FIVE OF JONATHAN'S LANDING PASSAGE ISLANDS

95

P.U.D.  
IN PART OF SECTIONS 6 & 7, TWP. 41S., RGE. 43 E.  
PALM BEACH COUNTY, FLORIDA  
IN 2 SHEETS SHEET NO. 2  
GEE & JENSON  
ENGINEERS-ARCHITECTS-PLANNERS, INC.  
WEST PALM BEACH, FLORIDA  
SEPTEMBER 1980

STATE OF FLORIDA  
COUNTY OF PALM BEACH  
This Plat was filed for record on  
this day of 1981  
and duly recorded in Plat Book No.  
on pages and  
JOHN B. DUNKLE, Clerk Circuit Court  
By: D.C.

100 0 100 200  
SCALE IN FEET SCALE: 1"=50'

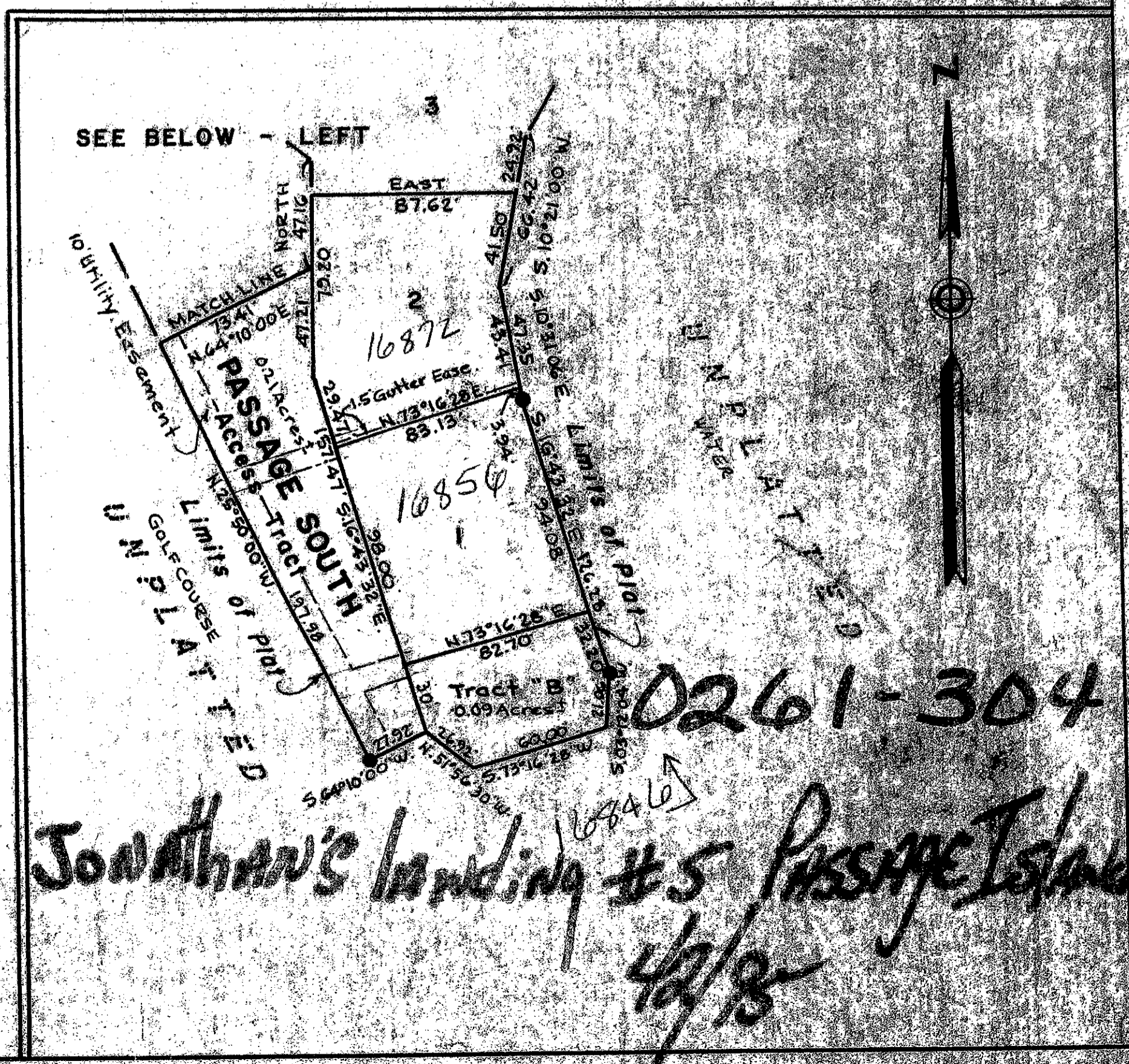


BAYTOWNE OF JONATHAN'S LANDING - P.U.D.  
P.B. 35 - PGS. 22 & 23

JONATHAN'S LANDING - PLAT TWO  
P.B. 35 - PGS. 20 & 21

### NOTES

- denotes Permanent Reference Monument
- Building Setback Lines shall be as required by Palm Beach County Zoning Regulations.
- There shall be no buildings or other structures placed on Utility Easements, except for pavement.
- There shall be no buildings or any kind of construction or the planting of trees or shrubs on Drainage Easements.
- Where Drainage Easements cross Cable Easements, Drainage Easements shall take precedent.
- Bearings as shown are relative to Intracoastal Waterway Map as recorded in Plat Book 17, Page 3-B, used throughout JONATHAN'S LANDING Plats.



0261-304  
Jonathan's Landing #5 Passage Island  
4/2/8